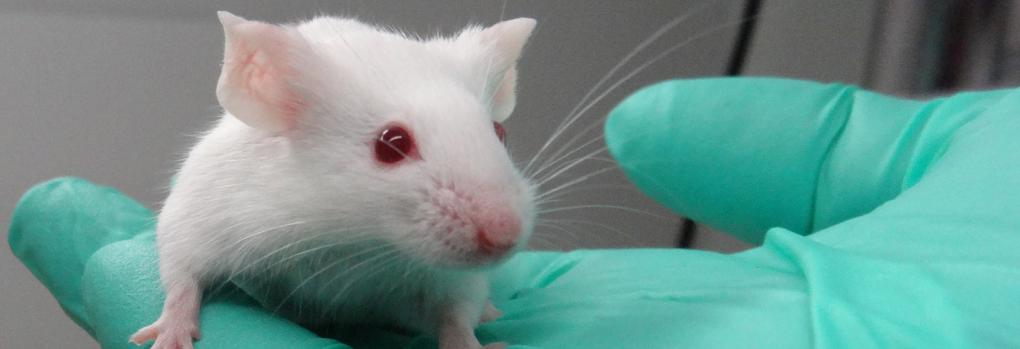


Scientific facilities available at the Babraham Institute



Biological Support Unit

The Babraham Institute provides unique research facilities of national importance. These have been developed with significant investment from the BBSRC. The Biological Support Unit (BSU) provides housing and care for rodents at a highly defined health status. The four internal units offer the highest standards of welfare with fully trained technicians offering excellence in husbandry and procedural technique to support both academic scientific research programmes and private companies.

Areas of expertise

The animal technicians within the Facility provide technical support to researchers. The technicians gain nationally recognised qualifications awarded by the Institute of Animal Technology and hold Home Office Personal Licences which permit them to perform regulated procedures.

Key staff hold further positions of responsibility under the Institute Establishment Licence. These include NACWO (Named Animal Care and Welfare Officer) and NTCO (Named Training and Competence Officer) roles.

The technicians have expertise in animal health barrier maintenance and husbandry. They are fully trained in the use of state-of-the-art animal housing systems and containment procedures.

Equipment and services on offer

Equipment

- Independently ventilated caging systems and containment facilities
- High level bio-secure and independently ventilated caging systems and containment facilities
- Flexible film isolators
- Open cage environments
- Containment Level 2 human pathogen suite
- Containment cabinets, change stations and down-draft benching

Services

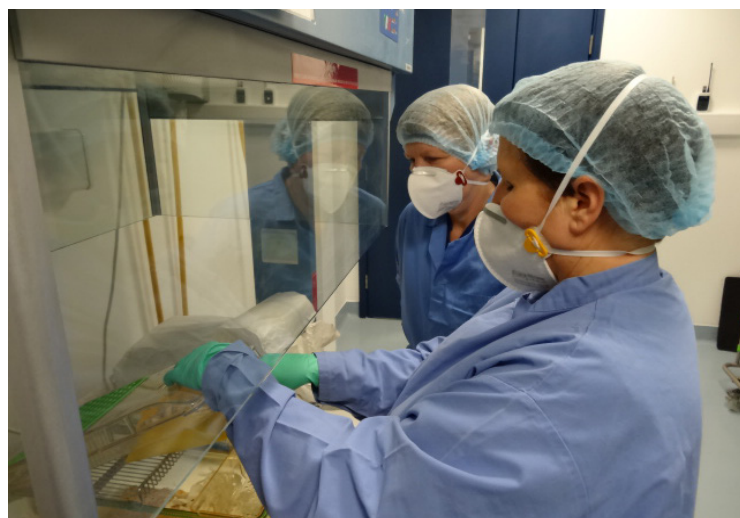
- A range of procedural services are available to include rederivation of mouse lines and embryo cryopreservation.

Pricing

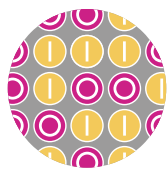
Details of prices for procedures, animal husbandry and room or cage hire are available on request. Husbandry costs, including diet, bedding and cage maintenance, are covered by a weekly charge per cage.

Clients have the flexibility to carry out experiments themselves, or to pay for facility technicians to carry out procedures on their behalf.

Renting of animal/procedure space in the Facility can be arranged on an exclusive, long-term basis, or alternatively clients may wish to rent space in shared areas.



Scientific facilities available at the Babraham Institute



Bioinformatics

The Bioinformatics group has a wide range of experience covering virtually all aspects of modern bioinformatics and statistics in both academic and commercial settings.



Biological Chemistry

The Biological Chemistry Facility provides a research capability to solve biological problems through the use of chemical knowledge and synthetic chemistry skills.



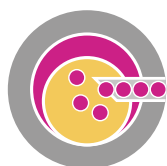
Biological Support Unit

The Biological Support Unit (BSU) provides housing and care for rodents at a highly defined health status, offering the highest standards of welfare, excellence in husbandry and procedural technique to support both academic scientific research programmes and private companies.



Flow Cytometry

The Flow Cytometry Facility offers high quality service and state-of-the-art instrumentation to members of the Babraham Institute and external companies, including those based on the Babraham Research Campus.



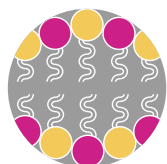
Gene Targeting

The Babraham Gene Targeting Facility provides a complete service to generate novel genetically altered mouse strains for biopharmaceutical companies and academic institutes.



Imaging

The Imaging Facility provides supported access to state-of-the-art fluorescence imaging technologies and offers expertise in live and fixed cell imaging.



Lipidomics

The Babraham Lipidomics Facility has established a series of LC-MS/MS, GC-MS/MS and HR/AM direct infusion mass spectrometric methods to analyse 37 classes of neutral lipids, phospholipids and sphingolipids from various biomedical samples.



Mass Spectrometry

The Mass Spectrometry Facility is equipped with a range of high resolution systems, which can be used for the identification, characterisation and quantitation of almost any type of biomolecule.



Sequencing

The Next Generation Sequencing Facility provides library quality control and sequencing services for the Babraham Institute and external companies, offering a variety of sequencing solutions for different project sizes and a broad range of applications.

