

# Scientific facilities available at the Babraham Institute



The Babraham Institute provides unique research facilities of national importance. These have been developed with significant investment from the BBSRC. The Bioinformatics group provides a central resource of expertise in computational biology and statistics to all research groups at the Babraham Institute. We also offer a commercial consultancy service for companies both on site and those based further afield. The benefits of the Bioinformatics group's software and services have ranged from facilitating ground-breaking cell biology research that could benefit human health to helping a spin-out company market its products.

## Areas of expertise

The Bioinformatics group has a wide range of experience covering virtually all aspects of modern bioinformatics and statistics in both academic and commercial settings. We have particular expertise in high-throughput sequencing including primary processing and all transcriptomics and epigenetics techniques.

We can provide everything from advice on appropriate analysis strategies and tools, to a full in-house analysis service, along with the development of custom software and pipelines.

## Services on offer

- Statistical advice or analysis
- Development of custom bioinformatics tools – to provide types of analysis not currently available, or to make existing bioinformatics tools more easily accessible
- Experimental design or data analysis consultation
- Data processing and analysis – a member of the group can analyse your data for you
- Bioinformatics and statistical training

## Pricing

Charges are based on the number of hours of analyst time (currently charged at £94.50 + VAT). All analysis can be viewed in our interactive helpdesk system so you can monitor your jobs as they progress. We are happy to provide estimates for work and discuss projects with no obligation.

## Training opportunities

Bioinformatics training is a key activity within the group. We run a regular series of training courses covering sequence analysis, high-throughput sequencing, statistics, programming and other topics likely to be of use to both bench scientists and bioinformaticians. These courses are able to accommodate both researchers at the Babraham Institute, Babraham Research Campus and external organisations.

Courses are regularly run on site at the Institute, and all courses can also be run at external sites provided that suitable training facilities are available. Full course details and materials for all Babraham bioinformatics training courses can be viewed on the Bioinformatics group website:  
[www.bioinformatics.babraham.ac.uk](http://www.bioinformatics.babraham.ac.uk)



# Scientific facilities available at the Babraham Institute



## Bioinformatics

The Bioinformatics group has a wide range of experience covering virtually all aspects of modern bioinformatics and statistics in both academic and commercial settings.



## Biological Chemistry

The Biological Chemistry Facility provides a research capability to solve biological problems through the use of chemical knowledge and synthetic chemistry skills.



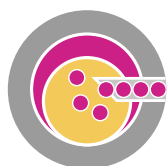
## Biological Support Unit

The Biological Support Unit (BSU) provides housing and care for rodents at a highly defined health status, offering the highest standards of welfare, excellence in husbandry and procedural technique to support both academic scientific research programmes and private companies.



## Flow Cytometry

The Flow Cytometry Facility offers high quality service and state-of-the-art instrumentation to members of the Babraham Institute and external companies, including those based on the Babraham Research Campus.



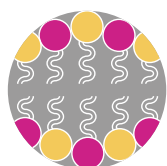
## Gene Targeting

The Babraham Gene Targeting Facility provides a complete service to generate novel genetically altered mouse strains for biopharmaceutical companies and academic institutes.



## Imaging

The Imaging Facility provides supported access to state-of-the-art fluorescence imaging technologies and offers expertise in live and fixed cell imaging.



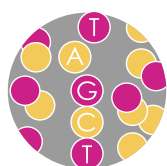
## Lipidomics

The Babraham Lipidomics Facility has established a series of LC-MS/MS, GC-MS/MS and HR/AM direct infusion mass spectrometric methods to analyse 37 classes of neutral lipids, phospholipids and sphingolipids from various biomedical samples.



## Mass Spectrometry

The Mass Spectrometry Facility is equipped with a range of high resolution systems, which can be used for the identification, characterisation and quantitation of almost any type of biomolecule.



## Sequencing

The Next Generation Sequencing Facility provides library quality control and sequencing services for the Babraham Institute and external companies, offering a variety of sequencing solutions for different project sizes and a broad range of applications.

