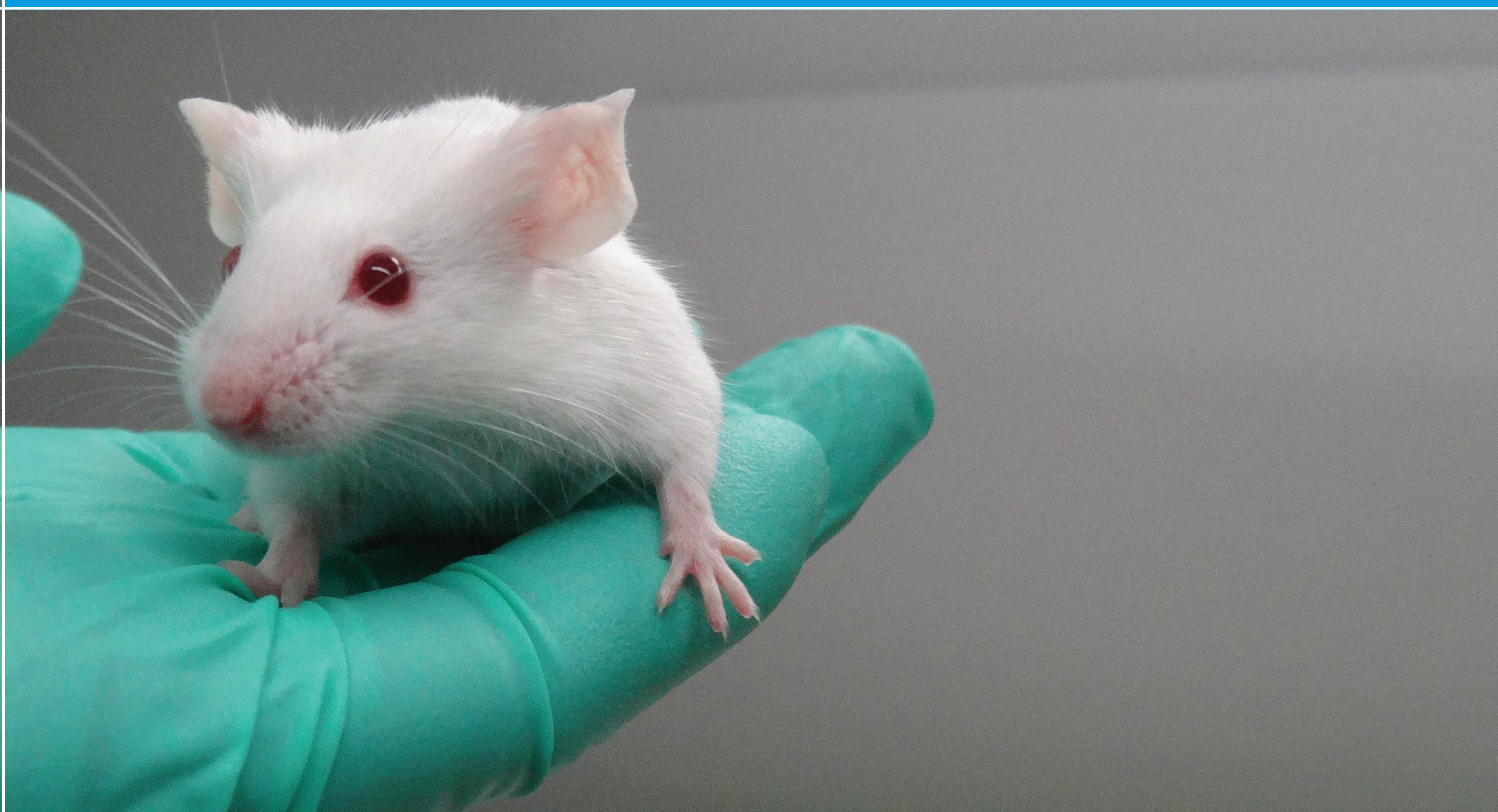


Biological Support Unit



The Biological Support Unit (BSU) is recognised as a leading facility in its field, providing housing and care for rodents at a highly defined health status. There are four internal units offering the highest standards of welfare with fully trained technicians offering excellence in husbandry and procedural technique to support both academic and commercial scientific research programmes.



Areas of Expertise

Extensive expertise in the Facility provides researchers with substantial support:

- Facility animal technicians have in-depth knowledge of animal health barrier maintenance and husbandry, and are fully trained in the use of state-of-the-art animal housing systems and containment procedures. Technicians gain nationally recognised qualifications awarded by the Institute of Animal Technology and hold Home Office Personal Licences which permit them to perform regulated procedures.
- Key staff hold further positions of responsibility under the Institute Establishment Licence. These include NACWO (Named Animal Care and Welfare Officer) and NTCO (Named Training and Competence Officer) roles.

Equipment

- Independently ventilated caging systems and containment facilities
- High level bio-secure and independently ventilated caging systems and containment facilities
- Flexible film isolators
- Open cage environments
- Containment Level 2 suites
- Containment cabinets, change stations and down-draft benching

Services

- Rooms in the Facility are designed to offer flexible layout and usage options enabling the team to respond to changing user requirements, including multi-species housing.
- A range of procedural services are available, including rederivation of mouse lines, embryo cryopreservation, sperm freezing, IVF and management of experimental cohorts.